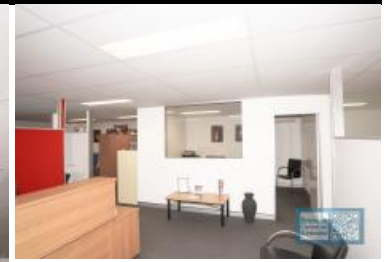


# Brendale Commercial & Industrial



## BRENDALE

Ground Floor Unit 8/ 253 Leitchs Rd

### 84M2 MODERN OFFICE SUITE

- 84m2 office
- Ideal office or medical suite
- Recently refurbished
- Freshly painted ready to occupy
- Ground floor office
- Air conditioned space
- Fitout included
- Clean open plan office area
- Managers offices
- Suspended ceiling & floor coverings included
- Private kitchenette (inside tenancy)
- Private amenities (inside tenancy)
- Walking distance to Railway Station
- Undercover parking
- Allocated parking
- 2 car parking spaces
- Tilt panel construction
- Strategic Northside location

Good access to Airport Precinct, Sunshine Coast & Gold Coast via Bruce Hwy & Gateway Motorway

For more information or to arrange an inspection please call the EXCLUSIVE AGENT Stan Topp of Brendale Commercial & Industrial.

The Phone Code for this property is: 2021. Please quote this number when phoning or texting.

Please Note: Commercial sales prices are excluding GST. Commercial lease prices are per annum + outgoings + GST. All sizes are approximate.

## Lease

**\$23,000**

PA + Outs + GST

Floor	84
Area	
Suburb	Brendale
Address	Ground Floor Unit 8/ 253 Leitchs Rd
Property ID	2021

## AGENT DETAILS



STAN TOPP

☎ 0416 114 215

stan@brendalecommercial.com.au