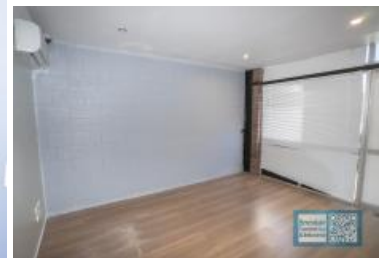
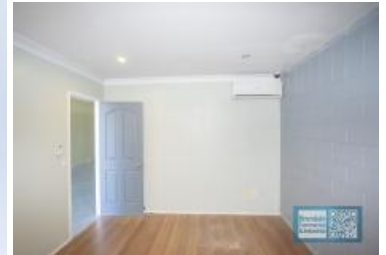


# Brendale Commercial & Industrial

Just Listed



## LAWNTON 75M2 INDUSTRIAL UNIT EXCLUSIVE AGENCY

- 75m2 industrial unit
- Classic industrial or storage unit
- Ideal small workshop or warehouse
- Well priced to suit the market
- Direct street frontage
- Vacant and ready to occupy
- 10m2 office space
- 65m2 warehouse space
- Shop front access
- Good internal racking height
- Natural light in warehouse
- Container height roller door
- Private kitchenette (inside tenancy)
- Service industry zoning
- Direct truck access from driveway
- Signage to main road
- Strategic Northside location

Good access to Airport Precinct, Sunshine Coast & Gold Coast via Bruce Hwy & Gateway Motorway

For more information or to arrange an inspection please call the EXCLUSIVE AGENT Stan Topp of Brendale Commercial & Industrial.

The Phone Code for this property is: 2036. Please quote this number when phoning or texting.

Please Note: Commercial sales prices are excluding GST. Commercial lease prices are per annum + outgoings + GST. All sizes are approximate.

### Lease

**\$18,000**  
PA + Outs + GST

Floor Area

75

Suburb

Lawnton

Property ID

2036

### AGENT DETAILS



STAN TOPP

☎ 0416 114 215

stan@brendalecommercial.com.au