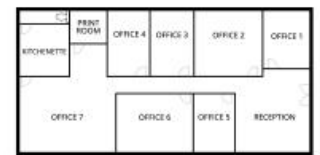


# Brendale Commercial & Industrial

Just Listed



TENANCY FLOOR PLAN 118/1193 South Pine Road



## BRENDALE

### 166M2 OFFICE SUITE EXCLUSIVE AGENCY

- 166m2 office suite
- First floor office
- Vacant and ready to occupy
- Air conditioned space
- Office fitout included
- Boardroom, meeting & reception areas
- Managers offices & open plan workspace
- Suspended ceiling & floor coverings included
- Views over parkland
- Shop front access entrance
- Private kitchenette (inside tenancy)
- Private amenities (inside tenancy)
- Tilt panel construction
- Modern complex
- Commercial zoning
- 4 car parking spaces
- Strategic Northside location

Good access to Airport Precinct, Sunshine Coast & Gold Coast via Bruce Hwy & Gateway Motorway

For more information or to arrange an inspection please call the EXCLUSIVE AGENT Stan Topp of Brendale Commercial & Industrial.

The Phone Code for this property is: 2061. Please quote this number when phoning or texting.

Please Note: Commercial sales prices are excluding GST. Commercial lease prices are per annum + outgoings + GST. All sizes are approximate.

## Sale

Floor Area  
Suburb  
Property ID

## Contact

Agent

166  
Brendale  
2061

## AGENT DETAILS



STAN TOPP

☎ 0416 114 215

stan@brendalecommercial.com.au