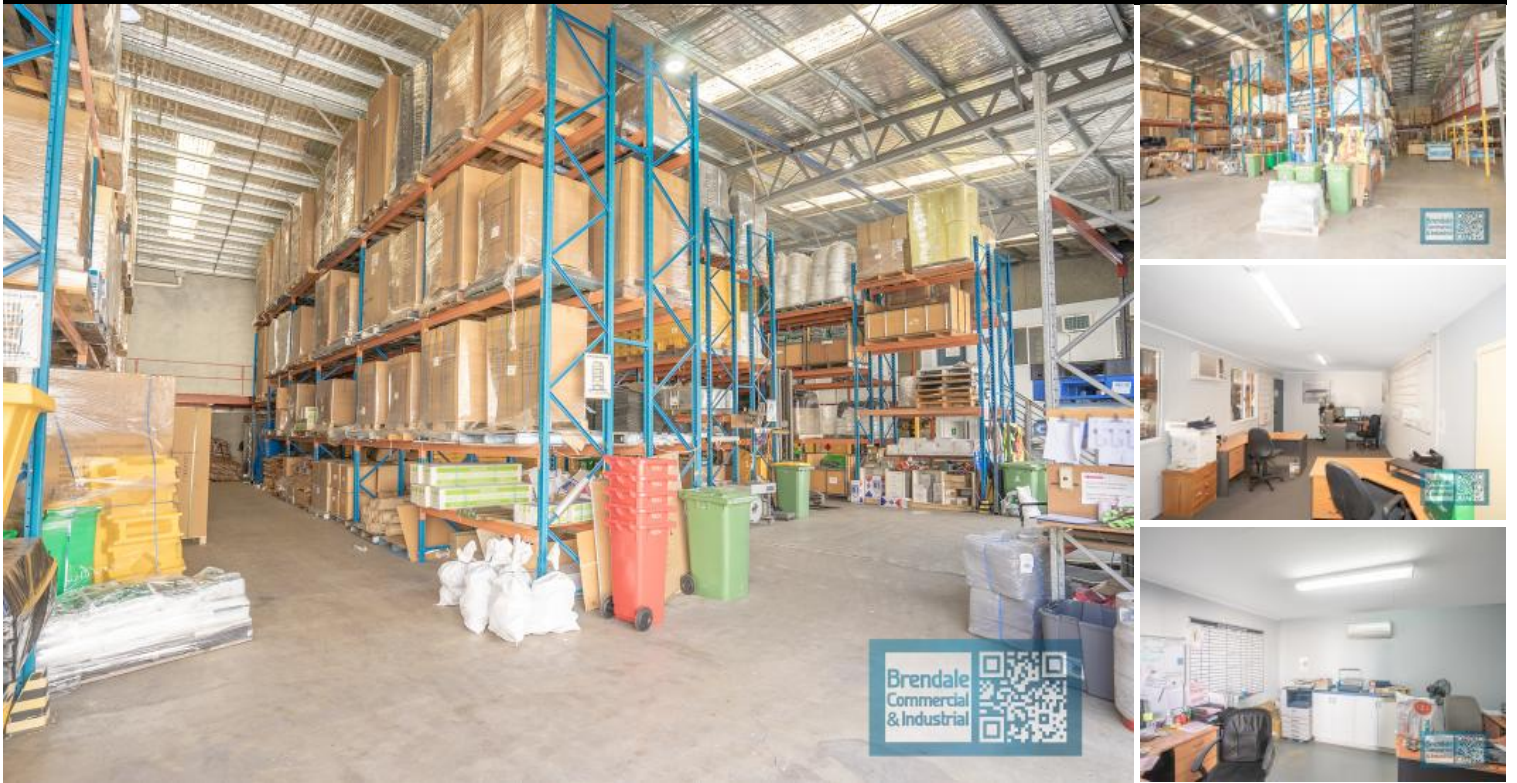


# Brendale Commercial & Industrial



## BRENDALE 469M2 INDUSTRIAL UNIT

- 469m2 industrial unit
- Classic industrial or storage unit
- Ideal small workshop or warehouse
- Well priced to suit the market
- Vacant and ready to occupy
- 28m2 office space
- 441m2 warehouse space
- Tilt panel construction
- Good internal racking height
- High bay lighting
- Natural light in warehouse
- Clearspan warehouse
- Electric roller door
- Container height roller door
- Private kitchenette (inside tenancy)
- Private amenities (inside tenancy)
- General Industry zoning (GI)
- Fully fenced site
- 5 car parking spaces
- Strategic Northside location
- Good access to Airport Precinct, Sunshine Coast & Gold Coast via Bruce Hwy & Gateway Motorway

For more information or to arrange an inspection please call Stan Topp of Brendale Commercial & Industrial.

The Phone Code for this property is: 2093. Please quote this number when phoning or texting.

Please Note: Commercial sales prices are excluding GST. Commercial lease prices are per annum + outgoing + GST. All sizes are approximate.

### Lease

Floor Area  
Suburb  
Property ID

### Contact

Agent

469  
Brendale  
2093

### AGENT DETAILS



STAN TOPP

☎ 0416 114 215

stan@brendalecommercial.com.au